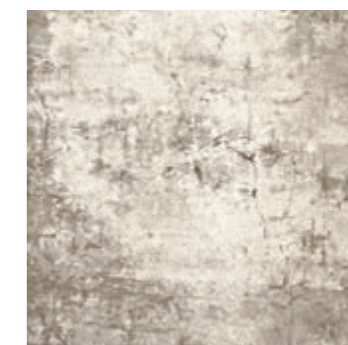


CEMENT

HİTİT SERAMİK

| | |
|----|--------------|
| 05 | Affresco |
| 07 | Archi-Stone |
| 09 | Berlin |
| 13 | Bond |
| 17 | Cashmere |
| 19 | Cement |
| 23 | Cotto Napoli |
| 25 | Earthstone |
| 27 | Indigo |
| 29 | Life |
| 33 | Lordo |
| 35 | Meyer |
| 37 | Milkyway |
| 39 | Nata |
| 41 | Nexos |
| 45 | Rusty |
| 49 | Saturn |
| 53 | Urban |

Affresco



PPZ.620.0974.018 60x60
Affresco Bej / Affresco Beige



PPZ.620.0974.063 60x60
Affresco Gri / Affresco Grey

Süpürgelik Temin Edilebilir / Available Skirtings
SBZ.710.0974.018 8x60 Affresco Bej Süpürgelik / Affresco Beige Skirting
SBZ.710.0974.063 8x60 Affresco Gri Süpürgelik / Affresco Grey Skirting



Archi-Stone



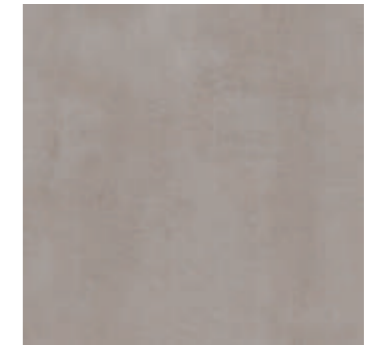
PPM.618.0975.020 60x120 Archi-Stone Beyaz / Archi-Stone White
 PPL.618.0975.020 60x120 Archi-Stone Beyaz Lappato / Archi-Stone White Lappato
 **PPF.618.0975.020 60x120 Archi-Stone Beyaz Fullpolished / Archi-Stone White Fullpolished



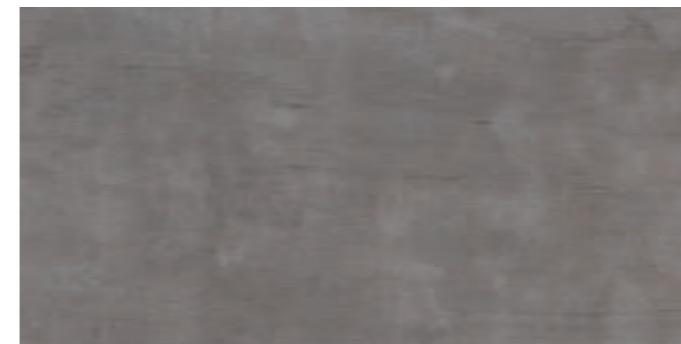
PPM.620.0975.020 60x60 Archi-Stone Beyaz / Archi-Stone White
 PPL.620.0975.020 60x60 Archi-Stone Beyaz Lappato / Archi-Stone White Lappato
 **PPF.620.0975.020 60x60 Archi-Stone Beyaz Fullpolished / Archi-Stone White Fullpolished



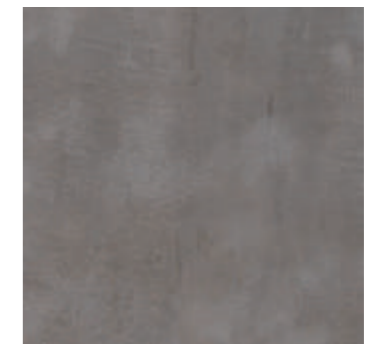
PPM.618.0975.018 60x120 Archi-Stone Bej / Archi-Stone Beige
 PPL.618.0975.018 60x120 Archi-Stone Bej Lappato / Archi-Stone Beige Lappato
 **PPF.618.0975.018 60x120 Archi-Stone Bej Fullpolished / Archi-Stone Beige Fullpolished



PPM.620.0975.018 60x60 Archi-Stone Bej / Archi-Stone Beige
 PPL.620.0975.018 60x60 Archi-Stone Bej Lappato / Archi-Stone Beige Lappato
 **PPF.620.0975.018 60x60 Archi-Stone Bej Fullpolished / Archi-Stone Beige Fullpolished



PPM.618.0975.010 60x120 Archi-Stone Antrasit / Archi-Stone Anthracite
 PPL.618.0975.010 60x120 Archi-Stone Antrasit Lappato / Archi-Stone Anthracite Lappato
 **PPF.618.0975.010 60x120 Archi-Stone Antrasit Fullpolished / Archi-Stone Anthracite Fullpolished



PPM.620.0975.010 60x60 Archi-Stone Antrasit / Archi-Stone Anthracite
 PPL.620.0975.010 60x60 Archi-Stone Antrasit Lappato / Archi-Stone Anthracite Lappato
 **PPF.620.0975.010 60x60 Archi-Stone Antrasit Fullpolished / Archi-Stone Anthracite Fullpolished





PPM.618.0084.020 60x120 Berlin Beyaz / Berlin White



PPM.620.0084.020 60x60 Berlin Beyaz / Berlin White



TBM.803.0084.020 30x30 Berlin Beyaz 5x5 Telis Dekor / Berlin White 5x5 Telis Dekor



PPM.618.0084.063 60x120 Berlin Gri / Berlin Grey



PPM.620.0084.063 60x60 Berlin Gri / Berlin Grey



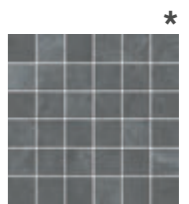
TBM.803.0084.063 30x30 Berlin Gri 5x5 Telis Dekor / Berlin Grey 5x5 Telis Dekor



PPM.618.0084.010 60x120 Berlin Antrasit / Berlin Anthracite



PPM.620.0084.010 60x60 Berlin Antrasit / Berlin Anthracite



TBM.803.0084.010 30x30 Berlin Antrasit 5x5 Telis Dekor / Berlin Anthracite 5x5 Telis Dekor



Berlin



WWM.910.0084.020 30x60
Berlin Beyaz / Berlin White



WWM.910.1019.020 30x60
Berlin Beyaz Dekor / Berlin White Dekor



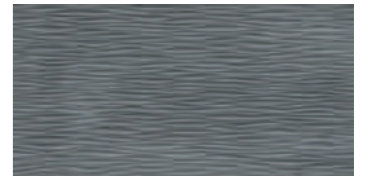
WWM.910.0084.063 30x60
Berlin Gri / Berlin Grey



WWM.910.1019.063 30x60
Berlin Gri Dekor / Berlin Grey Dekor



WWM.910.0084.010 30x60
Berlin Antrasit / Berlin Anthracite



WWM.910.1019.010 30x60
Berlin Antrasit Dekor / Berlin Anthracite Dekor





Bond

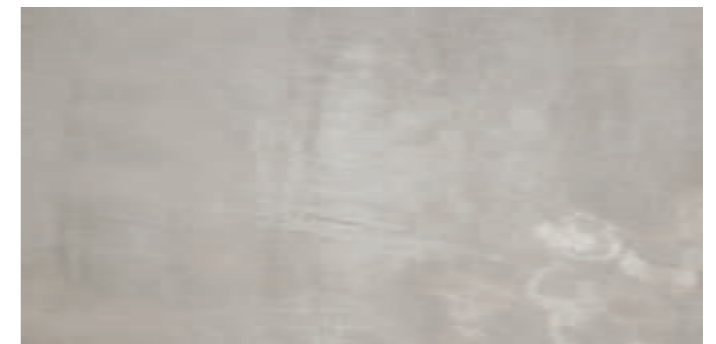


PPM.618.0108.068 60x120 Bond Ice



PPM.618.0108.018 60x120 Bond Bej / Bond Beige

*



PPM.618.0108.061 60x120 Bond Grej / Bond Greige



PPM.618.0108.063 60x120 Bond Gri / Bond Grey





Bond



PPM.620.0108.068 60x60
Bond Ice



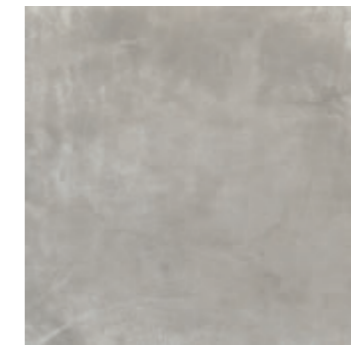
PPM.620.1020.068 60x60
Bond Ice Dekor / *Bond Ice Dekor*



PPM.620.0108.018 60x60
Bond Bej / *Bond Beige*



PPM.620.1020.018 60x60
Bond Bej Dekor / *Bond Beige Dekor*



PPM.620.0108.061 60x60
Bond Grej / *Bond Greige*



PPM.620.1020.061 60x60
Bond Grej Dekor / *Bond Greige Dekor*



PPM.620.0108.063 60x60
Bond Gri / *Bond Greig*



PPM.620.1020.063 60x60
Bond Gri Dekor / *Bond Greige Dekor*





Available 20 mm

PPM.619.0152.063 60x120 Cashmere Gri / Cashmere Grey
 PPM.621.0152.063 60x60 Cashmere Gri / Cashmere Grey
 PPM.619.0152.010 60x120 Cashmere Antrasit / Cashmere Anthracite
 PPM.621.0152.010 60x60 Cashmere Antrasit / Cashmere Anthracite

Cashmere



PPM.620.0152.050 60x60
 Cashmere Fildişi / Cashmere Ivory

#



FFM.408.0152.050 40x40
 Cashmere Fildişi / Cashmere Ivory

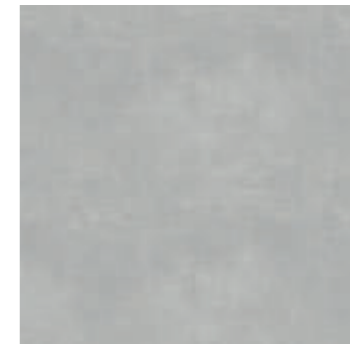


PPM.620.0152.108 60x60
 Cashmere Moka / Cashmere Mocha *

#



FFM.408.0152.108 40x40
 Cashmere Moka / Cashmere Mocha

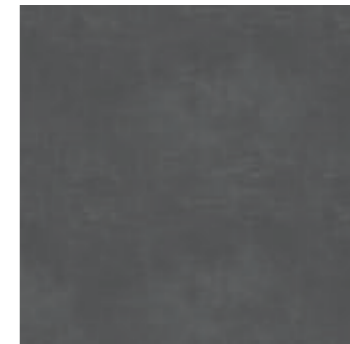


PPM.620.0152.063 60x60
 Cashmere Gri / Cashmere Grey *

#



FFM.408.0152.063 40x40
 Cashmere Gri / Cashmere Grey



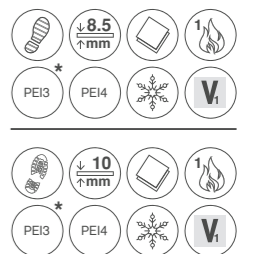
PPM.620.0152.010 60x60
 Cashmere Antrasit / Cashmere Anthracite

#



FFM.408.0152.010 40x40
 Cashmere Antrasit / Cashmere Anthracite

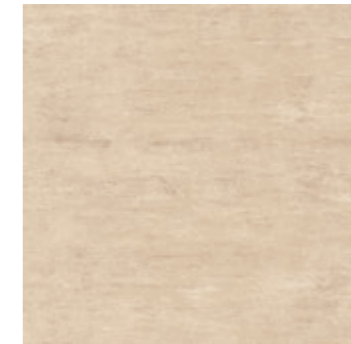
Sırlı Porselen / Glazed Porcelain



Cement



PPM.618.0157.018 60x120 Cement Bej / *Cement Beige*
PPL.618.0157.018 60x120 Cement Bej Lappato / *Cement Beige Lappato*



PPM.620.0157.018 60x60 Cement Bej / *Cement Beige*
PPL.620.0157.018 60x60 Cement Bej Lappato / *Cement Beige Lappato*



PFM.611.0157.018 40x40
 Cement Bej / *Cement Beige*



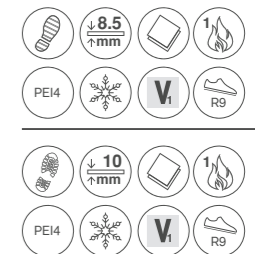
PPM.607.0157.018 30x60 Cement Bej / *Cement Beige*
PPL.607.0157.018 30x60 Cement Bej Lappato / *Cement Beige Lappato*

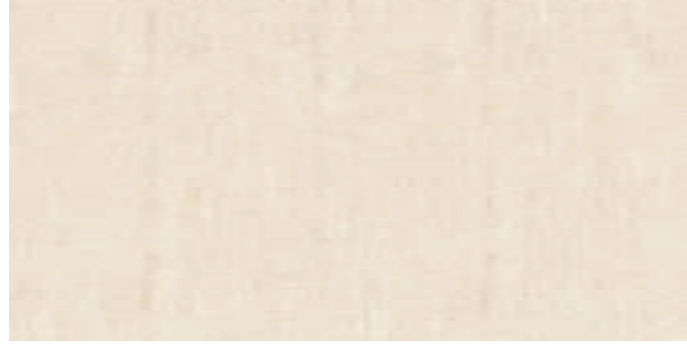


TBM.801.0157.018 30x30 Cement Bej
 3x8 Brick Dekor / *Cement Beige 3x8 Brick Dekor*
TBL.801.0157.018 30x30 Cement Bej
 Lappato 3x8 Brick Dekor / *Cement Beige Lappato 3x8 Brick Dekor*

Süprügellik Temin Edilebilir / Available Skirtings
SBM.710.0157.024 8x60 Cement Bone Süprügellik / *Cement Bone Skirting*
SBL.710.0157.024 8x60 Cement Bone Lappato Süprügellik / *Cement Bone Lappato Skirting*
SBM.708.0157.024 8x40 Cement Bone Süprügellik / *Cement Bone Skirting*

Sırlı Porselen / *Glazed Porcelain*

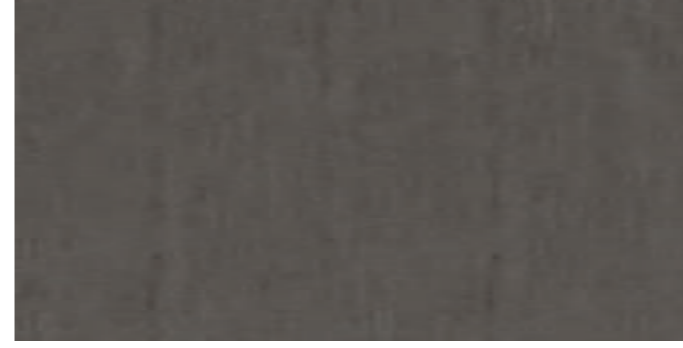




PPM.618.0157.024 60x120 Cement Bone
PPL.618.0157.024 60x120 Cement Bone Lappato



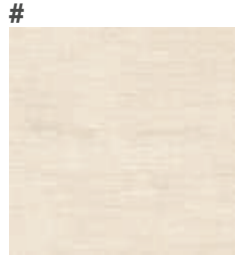
PPM.620.0157.024 60x60 Cement Bone
PPL.620.0157.024 60x60 Cement Bone Lappato



PPM.618.0157.063 60x120 Cement Gri / *Cement Grey*
PPL.618.0157.063 60x120 Cement Gri Lappato / *Cement Grey Lappato*



PPM.620.0157.063 60x60 Cement Gri / *Cement Grey*
PPL.620.0157.063 60x60 Cement Gri Lappato / *Cement Grey Lappato*



PFM.611.0157.024 40x40 Cement Bone



PPM.607.0157.024 30x60 Cement Bone
PPL.607.0157.024 30x60 Cement Bone Lappato



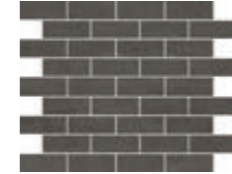
TBM.801.0157.024 30x30 Cement Bone 3x8 Brick Dekor / *Cement Bone 3x8 Brick Dekor*
TBL.801.0157.024 30x30 Cement Bone Lappato 3x8 Brick Dekor / *Cement Bone Lappato 3x8 Brick Dekor*



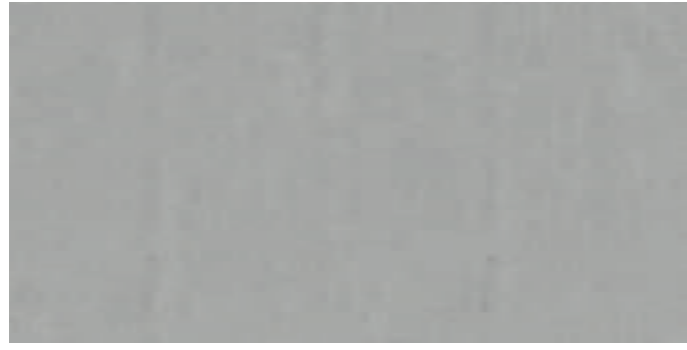
PFM.611.0157.063 40x40 Cement Gri / *Cement Grey*



PPM.607.0157.063 30x60 Cement Gri / *Cement Grey*
PPL.607.0157.063 30x60 Cement Gri Lappato / *Cement Grey Lappato*



TBM.801.0157.063 30x30 Cement Gri 3x8 Brick Dekor / *Cement Grey 3x8 Brick Dekor*
TBL.801.0157.063 30x30 Cement Gri-Antrasit Mix Lappato 3x8 Brick Dekor / *Cement Grey-Anthracite Mix Lappato 3x8 Brick Dekor*



PPM.618.0157.003 60x120 Cement Açık Gri / *Cement Light Grey*
PPL.618.0157.003 60x120 Cement Açık Gri Lappato / *Cement Light Grey Lappato*



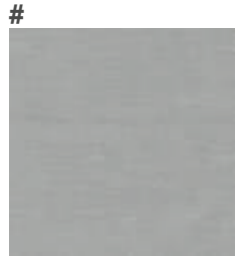
PPM.620.0157.003 60x60 Cement Açık Gri / *Cement Light Grey*
PPL.620.0157.003 60x60 Cement Açık Gri Lappato / *Cement Light Grey Lappato*



PPM.618.0157.010 60x120 Cement Antrasit / *Cement Anthracite*
PPL.618.0157.010 60x120 Cement Antrasit Lappato / *Cement Anthracite Lappato*



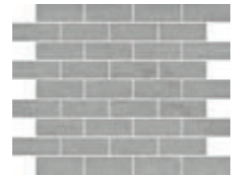
PPM.620.0157.010 60x60 Cement Antrasit / *Cement Anthracite*
PPL.620.0157.010 60x60 Cement Antrasit Lappato / *Cement Anthracite Lappato*



PFM.611.0157.003 40x40 Cement Açık Gri / *Cement Light Grey*



PPM.607.0157.003 30x60 Cement Açık Gri / *Cement Light Grey*
PPL.607.0157.003 30x60 Cement Açık Gri Lappato / *Cement Light Grey Lappato*



TBM.801.0157.003 30x30 Cement Açık Gri 3x8 Brick Dekor / *Cement Light Grey 3x8 Brick Dekor*
TBL.801.0157.003 30x30 Cement Açık Gri Lappato 3x8 Brick Dekor / *Cement Light Grey Lappato 3x8 Brick Dekor*



PFM.611.0157.010 40x40 Cement Antrasit / *Cement Anthracite*



PPM.607.0157.010 30x60 Cement Antrasit / *Cement Anthracite*
PPL.607.0157.010 30x60 Cement Antrasit Lappato / *Cement Anthracite Lappato*



TBM.801.0157.010 30x30 Cement Antrasit Mix 3x8 Brick Dekor / *Cement Anthracite Mix 3x8 Brick Dekor*
TBL.801.0157.010 30x30 Cement Gri-Antrasit Mix Lappato 3x8 Brick Dekor / *Cement Grey-Anthracite Mix Lappato 3x8 Brick Dekor*

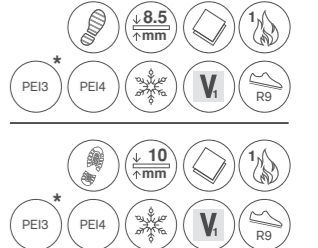
Sırlı Porselen / Glazed Porcelain



Süpürgelik Temin Edilebilir / Available Skirtings

- SBM.710.0157.018** 8x60 Cement Bone Süpürgelik / *Cement Bone Skirting*
- SBL.710.0157.018** 8x60 Cement Bone Lappato Süpürgelik / *Bone Beige Lappato Skirting*
- SBM.710.0157.003** 8x60 Cement Açık Gri Süpürgelik / *Cement Light Grey Skirting*
- SBL.710.0157.003** 8x60 Cement Açık Gri Lappato Süpürgelik / *Cement Light Grey Lappato Skirting*
- SBM.700.8157.018** 8x40 Cement Bone Süpürgelik / *Cement Bone Skirting*
- SBM.708.0157.003** 8x40 Cement Açık Gri Süpürgelik / *Cement Light Grey Skirting*

Sırlı Porselen / Glazed Porcelain



Süpürgelik Temin Edilebilir / Available Skirtings

- SBM.710.0157.063** 8x60 Cement Gri Süpürgelik / *Cement Grey Skirting*
- SBL.710.0157.063** 8x60 Cement Gri Lappato Süpürgelik / *Cement Grey Lappato Skirting*
- SBM.710.0157.010** 8x60 Cement Antrasit Süpürgelik / *Cement Anthracite Skirting*
- SBL.710.0157.010** 8x60 Cement Antrasit Lappato Süpürgelik / *Cement Anthracite Lappato Skirting*
- SBM.708.0157.063** 8x40 Cement Gri Süpürgelik / *Cement Grey Skirting*
- SBM.708.0157.010** 8x40 Cement Antrasit Süpürgelik / *Cement Anthracite Skirting*

Cotto Napoli



Available 20 mm



PPM.618.0539.010 60x120 Cotto Napoli Antrasit / Cotto Napoli Anthracite



PPM.620.0539.010 60x60 Cotto Napoli Antrasit / Cotto Napoli Anthracite



PPM.618.0539.063 60x120 Cotto Napoli Gri / Cotto Napoli Grey



PPM.620.0539.063 60x60 Cotto Napoli Gri / Cotto Napoli Grey



PPM.618.0539.044 60x120 Cotto Napoli Cotto



PPM.620.0539.044 60x60 Cotto Napoli Cotto



PPM.618.0539.072 60x120 Cotto Napoli Kahve / Cotto Napoli Brown



PPM.620.0539.072 60x60 Cotto Napoli Kahve / Cotto Napoli Brown



Earthstone



PPM.620.0234.020 60x60
Earthstone Beyaz / *Earthstone Beyaz*



PPM.620.1004.020 60x60
Earthstone Beyaz Dekor / *Earthstone Beyaz Dekor*



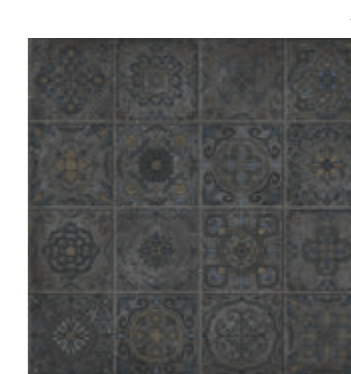
PPM.620.0234.063 60x60
Earthstone Gri / *Earthstone Grey*



PPM.620.1004.063 60x60
Earthstone Gri Dekor / *Earthstone Grey Dekor*



PPM.620.0992.010 60x60
Earthstone Antrasit / *Earthstone Anthracite*



PPM.620.1004.010 60x60
Earthstone Antrasit Dekor / *Earthstone Anthracite Dekor*



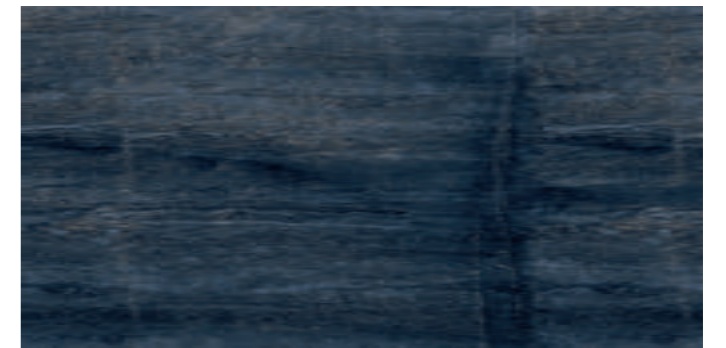
- PPM.621.0992.020 60x60 Earthstone Beyaz / *Earthstone White*
- PPM.621.1004.020 60x60 Earthstone Beyaz Dekor / *Earthstone White Dekor*
- PPM.621.0992.063 60x60 Earthstone Gri / *Earthstone Grey*
- PPM.621.1004.063 60x60 Earthstone Gri Dekor / *Earthstone Grey Dekor*
- PPM.621.0992.010 60x60 Earthstone Antrasit / *Earthstone Anthracite*
- PPM.621.1004.010 60x60 Earthstone Antrasit Dekor / *Earthstone Anthracite Dekor*



Indigo



PPF618.1057.103 60x120 İndigo Mavi Fullpolished / *Indigo Blue Fullpolished*



PPF618.1057.087 60x120 İndigo Koyu Mavi Fullpolished / *Indigo Dark Blue Fullpolished*





PPM.620.0443.020 60x60
Life Beyaz / Life White



PPM.607.0443.020 30x60
Life Beyaz / Life White



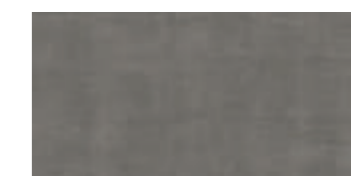
PPM.620.0443.063 60x60
Life Gri / Life Grey



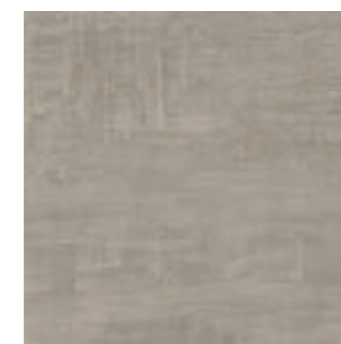
PPM.607.0443.063 30x60
Life Gri / Life Grey



PPM.620.0443.010 60x60
Life Antrasit / Life Anthracite



PPM.607.0443.010 30x60
Life Antrasit / Life Anthracite



PPM.620.0443.150 60x60
Life Taupe



PPM.607.0443.150 30x60
Life Taupe



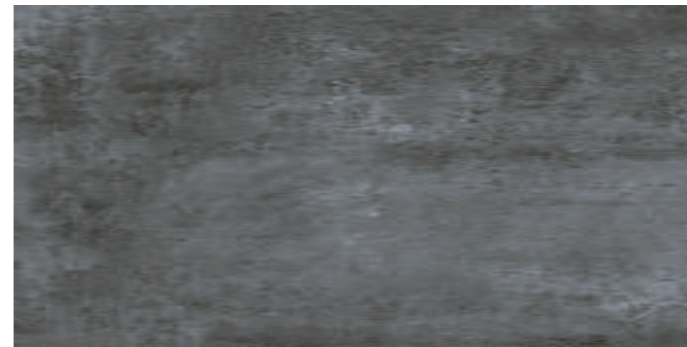




PPM.618.0453.063 60x120 Lordo Açık Gri / Lordo Light Grey



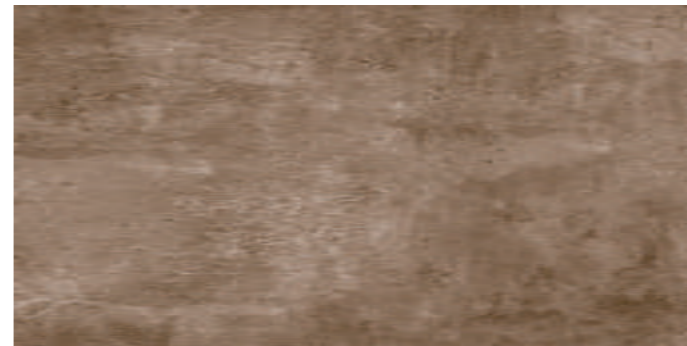
PPM.620.0453.063 60x60 Lordo Açık Gri / Lordo Light Grey



PPM.618.0453.010 60x120 Lordo Antrasit / Lordo Anthracite



PPM.620.0453.010 60x60 Lordo Antrasit / Lordo Anthracite



PPM.618.0453.150 60x120 Lordo Taupe



PPM.620.0453.150 60x60 Lordo Taupe



Meyer



PPM.620.1058.135 60x60 Meyer Sand



PPM.620.1058.063 60x60 Meyer Gri / Meyer Grey



PPM.620.1058.010 60x60 Meyer Antrasit / Meyer Anthracite *



Milkyway



PPM.620.0518.063 60x60
Milkyway Gri / *Milkyway Grey*



PPM.620.0518.070 60x60
Milkyway Fildişi / *Milkyway Ivory*



PPM.607.0518.063 30x60
Milkyway Gri / *Milkyway Grey*



PPM.607.0518.070 30x60
Milkyway Fildişi / *Milkyway Ivory*



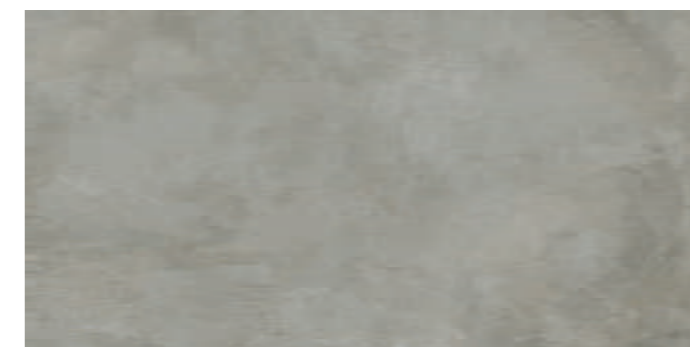
TBM.844.1021.063 30x60
Milkyway Gri Muretto Dekor /
Milkyway Grey Muretto Dekor



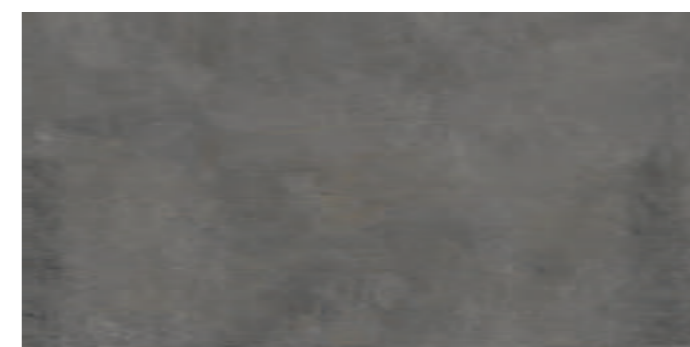
TBM.844.1021.070 30x60
Milkyway Ivory Muretto Dekor /
Milkyway Ivory Muretto Dekor



Nata



PPM.618.1056.063 60x120 Nata Gri / *Nata Grey*

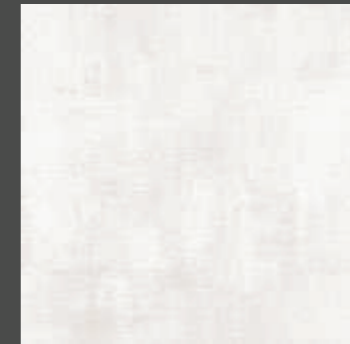


PPM.618.1056.010 60x120 Nata Antrasit / *Nata Anthracite*

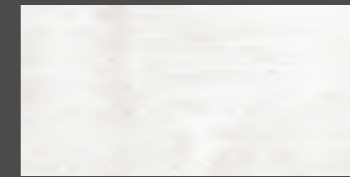




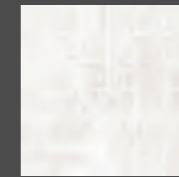
PPM.618.0557.020 60x120 Nexos Beyaz / Nexos White
 PPL.618.0557.020 60x120 Nexos Beyaz Lappato / Nexos White Lappato



PPM.620.0557.020 60x60 Nexos Beyaz / Nexos White
 PPL.620.0557.020 60x60 Nexos Beyaz Lappato / Nexos White Lappato



PPM.607.0557.020 30x60 Nexos Beyaz / Nexos White
 PPL.607.0557.020 30x60 Nexos Beyaz Lappato / Nexos White Lappato



TPM.803.0557.020 30x30
 Nexos Beyaz 5x5 Telis Dekor / Nexos White 5x5 Telis Dekor
 TBL.803.0557.020 30x30
 Nexos Beyaz Lappato 5x5 Telis Dekor / Nexos White Lappato 5x5 Telis Dekor



- PPM.619.0557.020 60x120 Nexos Beyaz / Nexos White
- PPM.621.0557.020 60x60 Nexos Beyaz / Nexos White
- PPM.619.0557.063 60x120 Nexos Gri / Nexos Grey
- PPM.621.0557.063 60x60 Nexos Gri / Nexos Grey
- PPM.619.0557.010 60x120 Nexos Antrasit / Nexos Anthracite
- PPM.621.0557.010 60x60 Nexos Antrasit / Nexos Anthracite





PPM.618.0557.063 60x120 Nexos Gri / Nexos Grey
PPL.618.0557.063 60x120 Nexos Gri Lappato / Nexos Grey Lappato



PPM.620.0557.063 60x60 Nexos Gri / Nexos Grey
PPL.620.0557.063 60x60 Nexos Gri Lappato / Nexos Grey Lappato



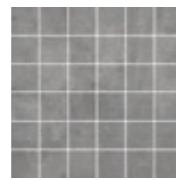
PPM.618.0557.119 60x120 Nexos Olive
PPL.618.0557.119 60x120 Nexos Olive Lappato



PPM.620.0557.119 60x60 Nexos Olive
PPL.620.0557.119 60x60 Nexos Olive Lappato



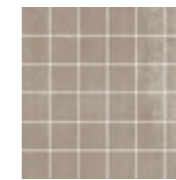
PPM.607.0557.063 30x60 Nexos Gri / Nexos Grey
PPL.607.0557.063 30x60 Nexos Gri Lappato / Nexos Grey Lappato



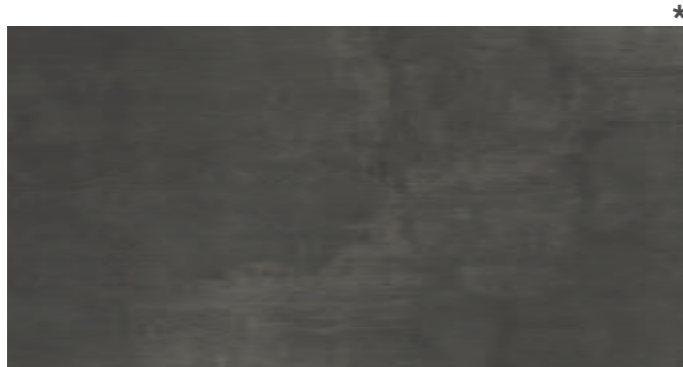
TBM.803.0557.063 30x30
 Nexos Gri 5x5 Telis Dekor / Nexos Grey 5x5 Telis Dekor
TBL.803.0557.063 30x30
 Nexos Gri Lappato 5x5 Telis Dekor / Nexos Grey Lappato 5x5 Telis Dekor



PPM.607.0557.119 30x60 Nexos Olive
PPL.607.0557.119 30x60 Nexos Olive Lappato



TBM.803.0557.119 30x30
 Nexos Olive 5x5 Telis Dekor / Nexos Olive 5x5 Telis Dekor
TBL.803.0557.119 30x30
 Nexos Olive Lappato 5x5 Telis Dekor / Nexos Olive Lappato 5x5 Telis Dekor



PPM.618.0557.010 60x120 Nexos Antrasit / Nexos Anthracite
PPL.618.0557.010 60x120 Nexos Antrasit Lappato / Nexos Anthracite Lappato



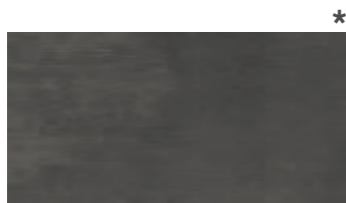
PPM.620.0557.010 60x60 Nexos Antrasit / Nexos Anthracite
PPL.620.0557.010 60x60 Nexos Antrasit Lappato / Nexos Anthracite Lappato



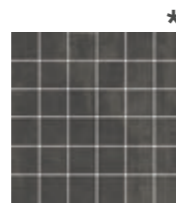
PPM.618.0557.150 60x120 Nexos Taupe
PPL.618.0557.150 60x120 Nexos Taupe Lappato



PPM.620.0557.150 60x60 Nexos Taupe
PPL.620.0557.150 60x60 Nexos Taupe Lappato



PPM.607.0557.010 30x60
 Nexos Antrasit / Nexos Anthracite
PPL.607.0557.010 30x60 Nexos Antrasit Lappato / Nexos Anthracite Lappato



TBM.803.0557.010 30x30
 Nexos Antrasit 5x5 Telis Dekor / Nexos Anthracite 5x5 Telis Dekor
TBL.803.0557.010 30x30
 Nexos Antrasit Lappato 5x5 Telis Dekor / Nexos Anthracite Lappato 5x5 Telis Dekor



PPM.607.0557.150 30x60 Nexos Taupe
PPL.607.0557.150 30x60 Nexos Taupe Lappato



TBM.803.0557.119 30x30
 Nexos Taupe 5x5 Telis Dekor / Nexos Taupe 5x5 Telis Dekor
TBL.803.0557.119 30x30
 Nexos Taupe Lappato 5x5 Telis Dekor / Nexos Taupe Lappato 5x5 Telis Dekor



Rusty



Rusty



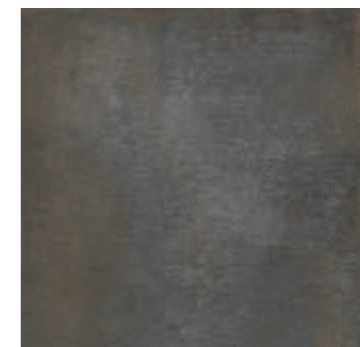
PPM.618.0983.063 60x120 Rusty Gri / Rusty Grey



PPM.620.0983.063 60x60
Rusty Gri / Rusty Grey



PPM.618.0983.010 60x120 Rusty Antrasit / Rusty Anthracite



PPM.620.0983.010 60x60
Rusty Antrasit / Rusty Anthracite

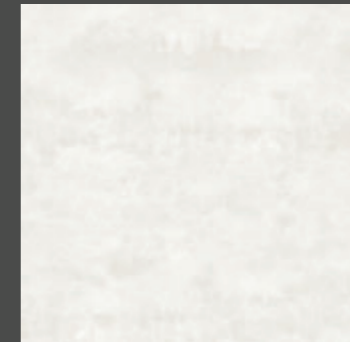


- PPM.619.0983.063 60x120 Rusty Gri / Rusty Grey
- PPM.621.0983.063 60x60 Rusty Gri / Rusty Grey
- PPM.619.0983.010 60x120 Rusty Antrasit / Rusty Anthracite
- PPM.621.0983.010 60x60 Rusty Antrasit / Rusty Anthracite

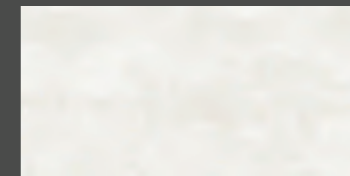




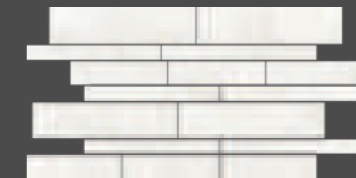
PPM.618.0724.020 60x120 Saturn Beyaz / *Saturn White*
 PPL.618.0724.020 60x120 Saturn Beyaz Lappato / *Saturn White Lappato*



PPM.620.0724.020 60x60 Saturn Beyaz / *Saturn White*
 PPL.620.0724.020 60x60 Saturn Beyaz Lappato / *Saturn White Lappato*

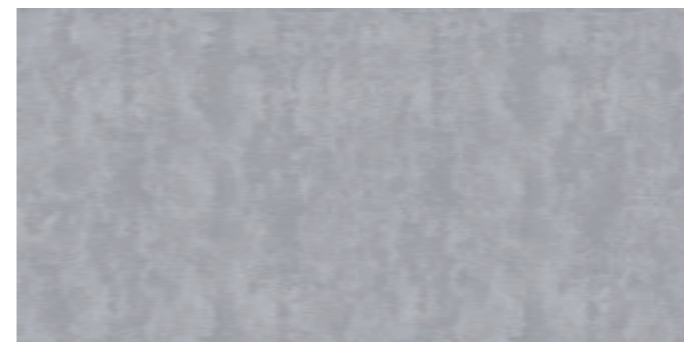


PPM.607.0724.020 30x60 Saturn Beyaz / *Saturn White*
 PPL.607.0724.020 30x60 Saturn Beyaz Lappato / *Saturn White Lappato*



TBM.844.1022.020 30x60
 Saturn Beyaz Muretto Dekor / *Saturn White Muretto Dekor*
 TBL.844.1022.020 30x60
 Saturn Beyaz Lappato Muretto Dekor / *Saturn White Lappato Muretto Dekor*

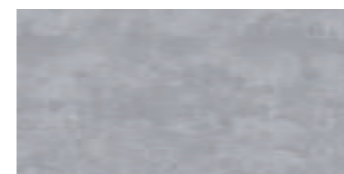




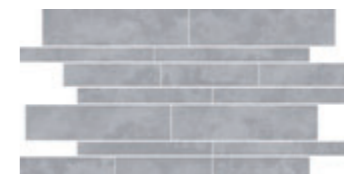
PPM.618.0724.063 60x120 Saturn Gri / Saturn Grey
PPL.618.0724.063 60x120 Saturn Gri Lappato / Saturn Grey Lappato



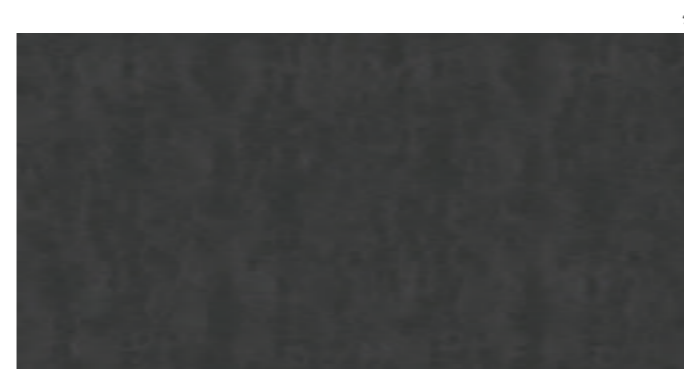
PPM.620.0724.063 60x60 Saturn Gri / Saturn Grey
PPL.620.0724.063 60x60 Saturn Gri Lappato / Saturn Grey Lappato



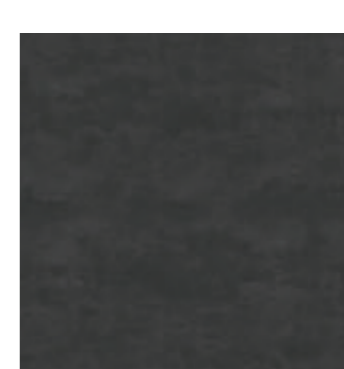
PPM.607.0724.063 30x60 Saturn Gri / Saturn Grey
PPL.607.0724.063 30x60 Saturn Gri Lappato / Saturn Grey Lappato



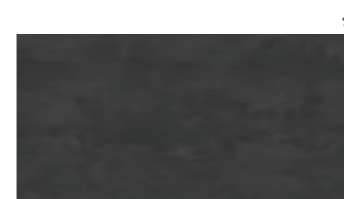
TBM.844.1022.063 30x60
Saturn Gri Muretto Dekor / Saturn Grey Muretto Dekor
TBL.844.1022.063 30x60
Saturn Gri Lappato Muretto Dekor / Saturn Grey Lappato Muretto Dekor



PPM.618.0724.010 60x120 Saturn Antrasit / Saturn Anthracite
PPL.618.0724.010 60x120 Saturn Antrasit Lappato / Saturn Anthracite Lappato



PPM.620.0724.010 60x60 Saturn Antrasit / Saturn Anthracite
PPL.620.0724.010 60x60 Saturn Antrasit Lappato / Saturn Anthracite Lappato



PPM.607.0724.010 30x60 Saturn Antrasit / Saturn Anthracite
PPL.607.0724.010 30x60 Saturn Antrasit Lappato / Saturn Anthracite Lappato



TBM.844.1022.010 30x60
Saturn Antrasit Muretto Dekor / Saturn Anthracite Muretto Dekor
TBL.844.1022.010 30x60
Saturn Antrasit Lappato Muretto Dekor / Saturn Anthracite Lappato Muretto Dekor



Urban



PPM.618.0852.020 60x120 Urban Beyaz / Urban White



PPM.620.0852.020 60x60 Urban Beyaz / Urban White



PPM.618.0852.063 60x120 Urban Gri / Urban Grey



PPM.620.0852.063 60x60 Urban Gri / Urban Grey



PPM.618.0852.010 60x120 Urban Antrasit / Urban Anthracite


























PPM.620.0852.010 60x60 Urban Antrasit / Urban Anthracite



PPM.621.0852.020 60x60 Urban Beyaz / Urban White
 PPM.621.0852.063 60x60 Urban Gri / Urban Grey
 PPM.621.0852.010 60x60 Urban Antrasit / Urban Anthracite



Teknik Semboller / Technical Symbols

| | | | |
|--|---|---|--|
| Duvar Karosu Wall Tiles |  |  | Rektifiye Rectified |
| Porselen Karosu Duvar kullanımı için Porcelain Tiles for Walls |  |  | Kalınlık Thickness |
| Hafif Trafik Fullpolished yüzeyler için Light Traffic for fullpolished surfaces |  |  | Dona Dayanım Frost Resistance |
| Hafif Trafik Light Traffic |  |  | Tek Pişirim Single Firing |
| Orta Trafik Medium Traffic |  |  | Çift Pişirim Double Firing |
| Yoğun Trafik Heavy Traffic |  |  | Üçüncü Pişirim Dekor Triple Firing Decor |
| En Düşük Sürtünme Low Friction |  |  | Renk Tonu Değişimi Tone Variations v1 |
| Normal Sürtünme Normal Friction |  |  | Renk Tonu Değişimi Tone Variations v2 |
| Yükseltilmiş Sürtünme Increased Friction |  |  | Renk Tonu Değişimi Tone Variations v3 |
| Lappato |  |  | Renk Tonu Değişimi Tone Variations v4 |
| Tam Parlak Yüzey Fullpolished Surface |  |  | Aşınma Dayanımı Abrasion Resistance PEI3 |
| | |  | Aşınma Dayanımı Abrasion Resistance PEI4 |

Paketleme Bilgileri / Packing List

| Ürün Product | Ebat (cm) Size (cm) | m ² /Palet m ² /Pallet | Kutu/Palet Box/Pallet | m ² /Kutu m ² /Box | Adet/Box Psc/Box | kg/Palet kg/Pallet |
|--|------------------------|---|--------------------------|---|---------------------|-----------------------|
| Porselen karo / porcelain tile | 60x120 | 43,20 | 30 | 1,44 | 2 | 980 |
| Porselen karo / porcelain tile (20 mm) | 60x120 | 21,60 | 30 | 0,72 | 1 | 1020 |
| Porselen karo / porcelain tile | 30x120 | 43,20 | 30 | 1,44 | 4 | 1015 |
| Porselen karo / porcelain tile (20 mm) | 30x120 | 23,04 | 32 | 0,72 | 2 | 1100 |
| Porselen karo / porcelain tile | 20x120 | 43,20 | 45 | 0,96 | 4 | 1010 |
| Porselen karo / porcelain tile | 15x120 | 43,20 | 30 | 1,44 | 8 | 1015 |
| Porselen karo / porcelain tile | 60x60 | 43,20 | 30 | 1,44 | 4 | 950 |
| Porselen karo / porcelain tile (20 mm) | 60x60 | 21,60 | 30 | 0,72 | 2 | 1020 |
| Porselen karo / porcelain tile | 40x40 | 76,80 | 48 | 1,60 | 5 | 1465 |
| Porselen karo / porcelain tile | 30x60 | 43,20 | 48 | 0,90 | 5 | 950 |
| Porselen karo / porcelain tile (Hexagon) | 21,5x25 | 43,47 | 63 | 0,69 | 17 | 870 |
| Porselen karo / porcelain tile | 19,7x19,7 | 72,00 | 72 | 1,00 | 25 | 1100 |
| Porselen karo / porcelain tile | 9,7x9,7 | 77,76 | 54 | 1,44 | 144 | 1150 |
| Porselen süpürgelik / porcelain skirting | 8x60 | 26,88 | 40 | 0,67 | 14 | 615 |
| Porselen süpürgelik / porcelain skirting | 8x40 | 43,20 | 45 | 0,96 | 30 | 830 |
| Duvar karosu / wall tile | 30x60 | 51,84 | 36 | 1,44 | 6 | 770 |
| Yer karosu / floor tile | 40x40 | 76,80 | 48 | 1,60 | 10 | 1465 |
| | | | | | | kg/Kutu kg/Box |
| Duvar karosu dekor / wall tile decor | 30x60 | * | * | 0,90 | 5 | 14,6 |
| Porselen karo dekor / porcelain tile decor | 30x30 (5x5) | * | * | 1 | 11 | 18 |
| Porselen karo dekor / porcelain tile decor | 30x30 (3x3) | * | * | 1 | 11 | 18 |
| Porselen karo bordür / porcelain tile border | 20x60 | * | * | 0,60 | 5 | 14,24 |
| Porselen karo bordür / porcelain tile border | 15x60 | * | * | 0,90 | 10 | 21,35 |
| Porselen karo bordür / porcelain tile border | 10x60 | * | * | 0,48 | 8 | 11,36 |
| Porselen karo bordür / porcelain tile border | 7,5x60 | * | * | 0,63 | 14 | 15 |
| Porselen karo dekor / porcelain tile decor | 38,5x60 | * | * | 0,96 | 4 | 22 |

Kalite Belgeleri / Quality Certificates



HİTİT SERAMİK

2022 Genel Katalog / Cement
2022 General Catalog / Cement



www.hititseramik.com



/hititseramik



/seramikhitit



/HititSeramik



/hititseramik